



# State of Louisiana Shelter at Home Program



**DEADLINE TO REGISTER IS OCTOBER 15, 2016**

## ABOUT SHELTER AT HOME

Rebuilding a home after disaster strikes is challenging enough without having to relocate away from your property.

Louisiana's Shelter at Home Program is helping eligible survivors whose homes were damaged in the August 2016 flooding stay in their homes during the process.

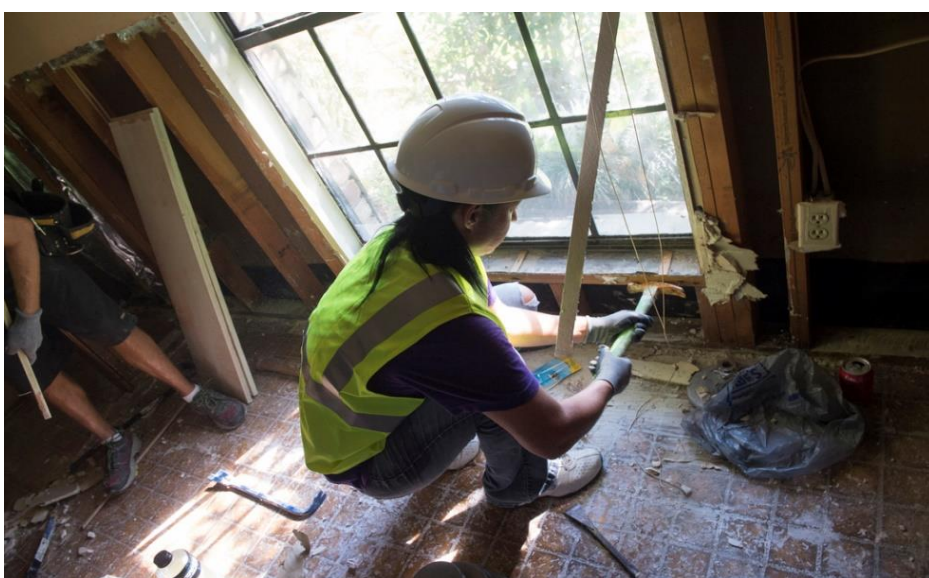
Shelter at Home provides temporary, bare minimum remediation to make a home safe and habitable during the rebuilding.

## ELIGIBILITY

- You must own and live in the home.
- It is determined your property can be made "safe and habitable" for up to \$15,000.
- While you do not have to register with FEMA to qualify for Shelter at Home, we encourage you to do so because you may be eligible for assistance from other FEMA programs.
- If you have registered with FEMA and are interested in this program, you must also apply for Shelter at Home.

## REGISTRATION

Apply for Shelter at Home online at [www.ShelterAtHome.la.gov](http://www.ShelterAtHome.la.gov) or call 800-927-0216. The deadline to apply is October 15, 2016.



A contracted employee for Louisiana's Shelter at Home program for flood survivors removing flood damaged debris from inside a home in East Baton Rouge Parish. (Photo by J.T. Blatty/FEMA)

## Questions?

Call: 800-927-0216

Email: [ShelterAtHome@la.gov](mailto:ShelterAtHome@la.gov)

## FIVE STEPS TO SHELTER AT HOME

### Step 1 – Application

- Apply for the program online at [www.ShelterAtHome.la.gov](http://www.ShelterAtHome.la.gov) or call 800-927-0216. A program representative will contact you to schedule the initial site visit at your home.

### Step 2 – Site Visit

- You will set up a time to meet an inspector from AECOM (the engineering firm working with the state), and a contractor at your home. On that day, they will inspect the property to determine whether the temporary repairs can make your home safe and habitable according to program guidelines. For example, if flood waters did not exceed 24 inches, the home is likely eligible for the program. If your home qualifies and you agree to the work to be done on your home, you will be asked to sign a right-of-entry form.

### Step 3 – Work Appointment

- The contractor will call you to schedule a time to begin the agreed upon-temporary repairs.

### Step 4 – Construction

- The contractor and subcontractors will make the repairs to your home. There will be specialists such as electricians and plumbers working on your home at different times and days. You should consider the repair work ongoing until the final inspection is ordered.

### Step 5 – Final Inspection

- You will meet with the inspector and the contractor for a final walk-through of your home to review the repairs. All parties must sign off if they agree the work has been completed.

## VARIABLES AFFECTING PROGRAM DELIVERY:

- Clean-up
- Drywall, insulation removal
- Quality control issues
- Right-of-entry access approval

The Federal Emergency Management Agency reimburses the State of Louisiana 90 percent of the costs for the Shelter at Home Program.



# State of Louisiana Shelter at Home Program



**DEADLINE TO REGISTER IS OCTOBER 15, 2016**

## ELIGIBLE WORK

The program offers key basic initial work that includes emergency clean-up and minor essential repairs to get people back home to make more permanent repairs.

## INTERIOR

- Inspect and test electrical, HVAC and plumbing systems to ensure they are safe and work.
- Remove drywall, insulation and other water-absorbing wall coverings (excluding fire-rated walls) damaged by flooding.
- Remove flood-damaged water-absorbing flooring material such as carpet, padding and other materials.
- Clean and sanitize the exposed floor and wall surfaces where flooring or wall coverings were removed.
- Remove debris from the street right-of-way.
- Ensure the home has one (1) temporary working bathroom, which could entail cleaning or repair.
- Maintain heating and minimum air conditioning for comfort.
- Repair or replace damaged water heaters.
- Inspect and repair natural gas lines if necessary.
- Test and repair, or replace and install smoke and carbon monoxide detectors.
- Provide mini-refrigerators and microwaves as necessary. (The appliance allowance is \$500 where needed).

## EXTERIOR

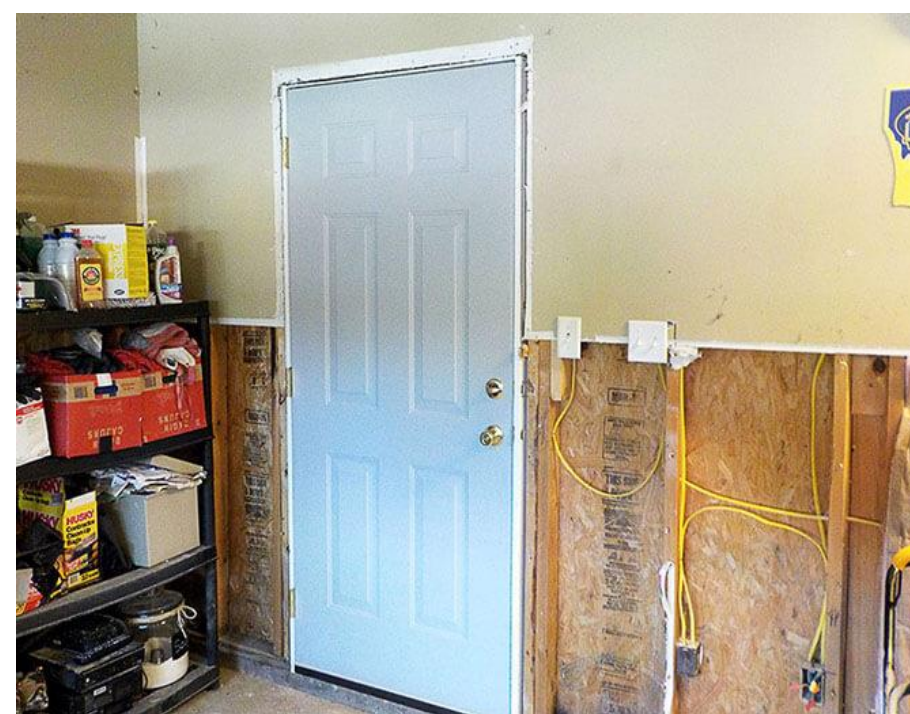
- Take temporary actions to weatherproof the home and prevent water intrusion; repairs could be temporary patches.
- Patch doors (minor and quick repairs), replace door hardware, and replace/repair door jambs and headers as necessary for secure entry and exit.
- Secure broken windows with minor carpentry or hardware repairs.
- Repair damaged entry stairs or porches to allow safe entrance and exit.
- Ensure that plumbing is connected to a sanitary sewer or approved sewage disposal system.
- Ensure that potable water is available and operational.



The contractor will make sure the electrical system is safe and working. This patch of drywall with the electrical outlet is temporary but functional.



The kitchen sink is framed in and missing cabinets but functional.



Exterior doors will provide a secure entry and exit.

## HOW TO CHECK YOUR STATUS

If you apply for Shelter at Home, the State of Louisiana will assign you a Case Manager to work directly with you. If you have applied for the program but have not been contacted, you can call 800-927-0216 and ask to speak to your Case Manager. Be sure to ask for the Case Manager's direct line and email to make contact easier.